

Dry Creek

VINEYARD

FAMILY WINEMAKING  
SINCE 1972



www.drycreekvineyard.com



Wine Club Newsletter – May 2013

GREETINGS!



Ah, Zinfandel. My love affair with Zinfandel dates back to when I first started working at the winery as a teenager. During harvest, I did pumpovers

and smelling that freshly fermenting Zinfandel juice – I just knew we were making something really special.

The cover story of this issue features the Beeson Ranch Vineyard. It is perhaps the most famous old vine Zinfandel vineyard in the Dry Creek Valley. As for the wine, well, it's my favorite in our entire lineup. It's so spicy and complex. It is, in a word, delicious.

This summer we are featuring some exciting events at the winery which I encourage you to make plans to attend. New this year is our seated Zinfandel tasting in the cellar before Summer of Zin. This is not to be missed!

We are also going sailing on the San Francisco Bay during the America's Cup. Talk about memorable! It would not be a stretch for me to say this summer is going to be one of our most exciting – America's Cup on the Bay, new tasting experiences and much, much more.

As always, we love to hear from you. Please feel free to write us at [vs@drycreekvineyard.com](mailto:vs@drycreekvineyard.com) to share your feedback on this club or anything else Dry Creek Vineyard related.

My best,  
**KIM STARE WALLACE**  
President



An Icon in the Dry Creek Valley:

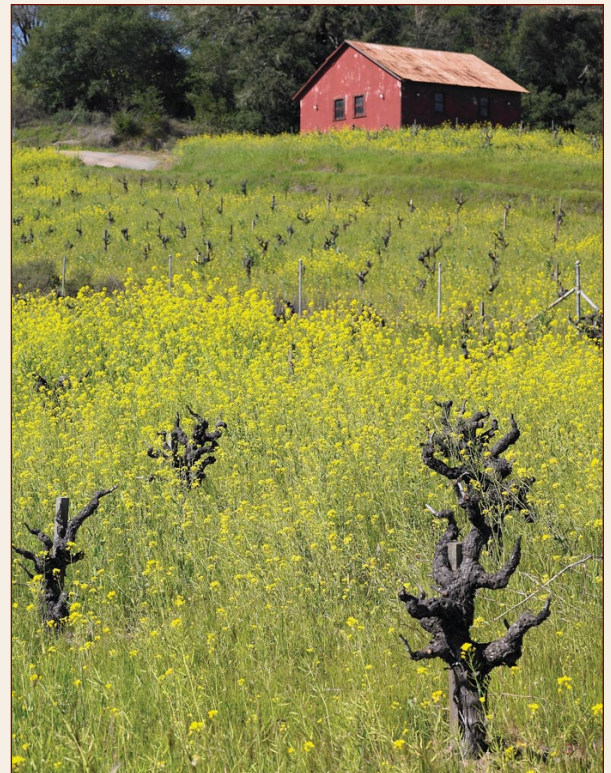
# BEESON RANCH VINEYARD

There are few places on earth that inspire a poetry of adjectives that seemingly defy imagination. The Beeson Ranch Vineyard however, is just such a place. Iconic, authentic, and extraordinary are certainly words that do justice in describing the overwhelming sense of history to this vineyard. Beeson Ranch is about the perseverance and dedication to farming old vine vineyards – not just in the Dry Creek Valley but in the entirety of wine country.

The history of this famed vineyard dates back to the late 1800s when Dry Creek Valley was settled by Italian immigrants. Back then, it was common practice to plant your own vineyard to make table wine for family and friends. In the case of Beeson Ranch Vineyard, several different varieties were planted including Zinfandel, Petite Sirah, Alicante Bouschet, and Mourvèdre. Farming a vineyard in the 1800s was laborious, difficult work. Farmers would walk behind horse and plow, tilling the soil in preparation for the seasonal harvest.

Through the early part of the 1900s, the wine industry began to grow and many families in the Dry Creek Valley took to cultivating vineyards, producing and selling wine full time from their small family farms. However, at the end of Prohibition, the wine industry virtually dried up and many farmers were forced to move to other kinds of agriculture. Through all of these changes, including the famed 1906 earthquake, Beeson Ranch Vineyard managed to survive.

Located on West Dry Creek Road (just up from Madrona Manor) the 5-acre Beeson Ranch Vineyard remained in the Beeson family for more than 80 years. Perry Beeson, who passed away at the age of 90 in 2005, spent his entire life working to preserve his cherished old vine vineyard.



MUSTARD IN BLOOM AT THE BEESON RANCH

CONTINUES ON BACK PAGE



**NEW THIS YEAR!**

**SATURDAY, JUNE 29, 2013 • 11 AM – NOON**  
**Special Zinfandel Retrospective Tasting / \$20**



New this year, prior to our Summer of Zin event, we are hosting an educational seminar in our cellar featuring some of our most cherished Zinfandels.

Seating for this event will be extremely limited so be sure to RSVP to Salina Littleton at [vsc@drycreekvineyard.com](mailto:vsc@drycreekvineyard.com), or call her at 707-433-1000 x123.

**SATURDAY, JUNE 29, 2013 • 1 PM - 4 PM**

Gates Open at Noon

**Summer of Zin – Featuring the Sun Kings!**  
 \$15 wine club members / \$20 general public



The Sun Kings are back! This is the Bay Area's premier Beatles cover band and they are simply incredible. Each year, we have a sold out picnic area to witness an awesome concert with delicious DCV wines and a terrific selection of gourmet vendors. Make your plans now to see the second side of Abbey Road by this incredible band!

Advanced ticket purchase is strongly encouraged. Limited VIP reserved seating for Club Members. For tickets please email Salina Littleton at [vsc@drycreekvineyard.com](mailto:vsc@drycreekvineyard.com), call her at 707-433-1000 x123, or purchase online.

**SATURDAY, JULY 13, 2013 • 5:30 PM - 9:30 PM**  
**Summer Wine Club Dinner / \$125 per person**



Join us under the stars for a summertime evening to remember at Dry Creek Vineyard. Upon your arrival, you'll be greeted by delicious Sauvignon Blanc and appetizers on our picnic grounds. Then, we'll make our way to the secret garden for a seated retrospective tasting led by Kim Stare Wallace, Winemaker Tim Bell and Vineyard Manager Duff Beville.

Following the tasting, we will adjourn to the cellar for a farm-to-table dinner experience not to be missed. Each course will be expertly paired with a Dry Creek Vineyard wine. Finally, we will retire to the picnic grounds for dessert, live music, and dancing under the stars.

This exclusive experience will be intimate and memorable, so there are a very limited number of seats available. Please RSVP to Salina Littleton at [vsc@drycreekvineyard.com](mailto:vsc@drycreekvineyard.com) or call her at 707-433-1000 x123.

**America's Cup Day on the Bay / Price & Date are TBD**



Join us for a spectacular day on the bay during the final race of the 2013 America's Cup. This is a once-in-a-lifetime opportunity so be sure to watch for more details as there will be only a handful of slots open for this exclusive experience.

*\*Due to race dates and other factors, please confirm with Salina Littleton before making your travel arrangements.*

## WHAT A DIFFERENCE 40 YEARS MAKES: AN UPDATE FROM DAVE STARE



As many of you know, I formally retired in 2007, after handing off the reins to the next generation. I still keep in touch with the latest happenings at the winery but just from a distance. I am thoroughly enjoying my retirement—traveling, playing music in two different bands (after a fifty year absence!), painting, and exploring some other personal interests.

One project that I'm actively involved with is Global Partners for Development. This Sonoma County based charity works in East Africa mainly in two fields - bringing clean water and improved sanitation to villages and building schools and providing scholarships to young African women to complete their secondary school education.

The accompanying photo is of my wife and me meeting one of our students in a primary school funded by GPFD.

To learn more about GPFD, I'd like to encourage you to visit their website at [www.gpfd.org](http://www.gpfd.org). A year ago, I had the opportunity to travel to Africa and was very moved by what I saw.

To reach out to GPFD, please contact them at [info@gpfd.org](mailto:info@gpfd.org).



## 30% SAVINGS!

Order two or more cases and receive **30% SAVINGS**. Please note: discounts can be applied to "mixed cases".

Call Salina Littleton at 800-864-9463 x123 or order from our online store. **Discount will be applied when you check out.**

## Win a \$25 GIFT CERTIFICATE

Be one of the first five members to review one of our May club wines, and we will send you a \$25 gift certificate by return email (limit one per membership).

To review the wines visit our online store, log in as a club member and go to "club member wines".

AVERAGE RATING





## AN ICON IN THE DRY CREEK VALLEY .....

Now farmed by local vineyard expert Paul Bernier, Paul has made it his life's mission to save old vine vineyards from the clutches of new development and growth.

Since the mid 1970s, we have been the only winery to receive grapes from this cherished property. There are several great stories that have, over the years, grown to legend here at the winery. One such story involves winery partner Don Wallace. Early in his career, Don was active in managing our estate as well as grower/partner vineyards. During harvest, Don visited Beeson Ranch, watching the skilled laborers hand pick each vine. As he watched, he noticed something unusual. Before picking the grapes, the worker would gently kick the bottom of the vine. Curiosity peaked, Don asked Paul Bernier why they were doing that. "Rattlesnakes," said Paul. "These old vines are hollow and the snakes love to coil up inside the vine. They kick the base of the vine first. If they get a rattle, they move on."

Each new vintage of Beeson Ranch Zinfandel is like a time capsule, harkening back to a bygone era of grape growing and farming. The aroma and flavor profile reflect the distinction of the vineyard – white pepper, dark blackberry fruits, and earthy, dusty tannins are all part of

the uniqueness of this wine. Perhaps Paul Bernier put it best when he said, "There's nothing fancy here – it's just the soil, the weather, and the vineyard, all coming together to make a terrific bottle of wine."



GNARLED OLD VINES

## ◆ WINE LIST ◆

SIGNATURE WINES	Retail Bottle	CLUB MEMBER PRICING	
		20% Savings Bottle	25% Savings Case
2012 Dry Chenin Blanc - <i>Clarksburg</i>	\$12.00	\$9.60	\$108.00
2012 Fumé Blanc - <i>Sonoma County</i>	\$14.00	\$11.20	\$126.00
2012 Sauvignon Blanc - <i>Dry Creek Valley</i>	\$16.00	\$12.80	\$144.00
2010 Foggy Oaks Chardonnay - <i>Russian River Valley</i>	\$20.00	\$16.00	\$180.00
2010 Heritage Zinfandel - <i>Sonoma County</i>	\$19.00	\$15.20	\$171.00
2010 Merlot - <i>Dry Creek Valley</i>	\$20.00	\$16.00	\$180.00
2009 Cabernet Sauvignon - <i>Dry Creek Valley</i>	\$25.00	\$20.00	\$225.00
2010 Old Vine Zinfandel - <i>Dry Creek Valley</i>	\$30.00	\$24.00	\$270.00
2009 Meritage - <i>Sonoma County</i>	\$30.00	\$24.00	\$270.00
2009 The Mariner - <i>Dry Creek Valley</i>	\$45.00	\$36.00	\$405.00
LIMITED RELEASE WINES			
2011 Taylor's Vineyard Sauvignon Blanc - Musqué Clone - <i>Dry Creek Valley</i>	\$25.00	\$20.00	\$225.00
2012 Petite Zin Rosé - <i>Dry Creek Valley</i>	\$18.00	\$14.40	\$162.00
2010 DCV10 Pinot Noir - <i>Russian River Valley</i>	\$34.00	\$27.20	\$306.00
2010 Somers Ranch Zinfandel - <i>Dry Creek Valley</i>	\$38.00	\$30.40	\$342.00
2010 Beeson Ranch Zinfandel - <i>Dry Creek Valley</i>	\$38.00	\$30.40	\$342.00
2010 Estate Petite Sirah - Spencer's Hill Vineyard - <i>Dry Creek Valley</i>	\$34.00	\$27.20	\$306.00
2008 Endeavour Cabernet Sauvignon - <i>Dry Creek Valley</i>	\$65.00	\$52.00	\$585.00
DESSERT WINES – 375 ML			
2007 Soleil - <i>Dry Creek Valley</i>	\$35.00	\$28.00	\$315.00

P.O. Box T • 3770 Lambert Bridge Road  
Healdsburg, CA 95448  
Tel. 707-433-1000 • 800-864-9463  
www.drycreekvineyard.com

Wine Club Administrator: Salina Littleton x123  
vsc@drycreekvineyard.com  
Content: 100% Recycled, 50% Post-Consumer Waste,  
Processed Chlorine Free

